

2023

Sunnyside Sprint

1st and 2nd July



**Support Crew
Information**



Race details

- Sunnyside oval: Start line Saturday and Sunday including the race briefing
- Sunday - Leg 1 - Craft head up river from Sunnyside oval to Winnejup falls

Check point 1 – Winnejup falls

NO ACCESS TO SUPPORT CREW – Officials only

- Craft regroup and turn around once all craft are accounted for.
- Craft start in the order they finished leg 1- one boat per grid
- Leg 2 – Craft head down river to Bridgetown – 29 kms

Check point 2 - Sunnyside oval

- **Support crew are required to wait for your craft and ensure it is checked off by an official at Sunnyside oval before heading down river towards Bridgetown**
- Support Crew to then continue to head down river on Tweed road

Checkpoint 3 Road crossing

- This is a boat retrieval point if required.
- Caution must be taken when entering off Tweed road – This is a private property. Further instructions to follow at race briefing

Viewing points

- The Steps Rapid
- The Basin Rapid – To view at this rapid all vehicles must park to the side of the road and **NOT TO ENTER THE PROPERTY. As per the map you must walk down the paddock on the right-hand side of the fence line to the water.**

Finish

- To head to the finish line turn off Tweed road onto south western highway heading into Bridgetown then turn right into Blackwood River Park to the finish line (just under the bridge)

If your craft does NOT make it to Bridgetown.

- If your craft breaks down between Winnejup – restart / turn around your craft will be towed to Sunnyside oval
- If your craft breaks down between Sunnyside oval / check point 2 and Bridgetown, it will be towed to the road crossing check point 3 unless the support crew has been advised otherwise by an official.
- If your craft made it past check point 3 / road crossing it will be towed to Bridgetown unless the support crew has been advised otherwise by an official.

Sunnyside oval

From the intersection of South western highway & Tweed Road, head 12 km down tweed Road and turn left onto Sunnyside road gravel (where the Volunteer Firefighting shed is)

Saturday - Start / finish practice

Sunday - Race start and checkpoint 2



Winnejump falls

Private property

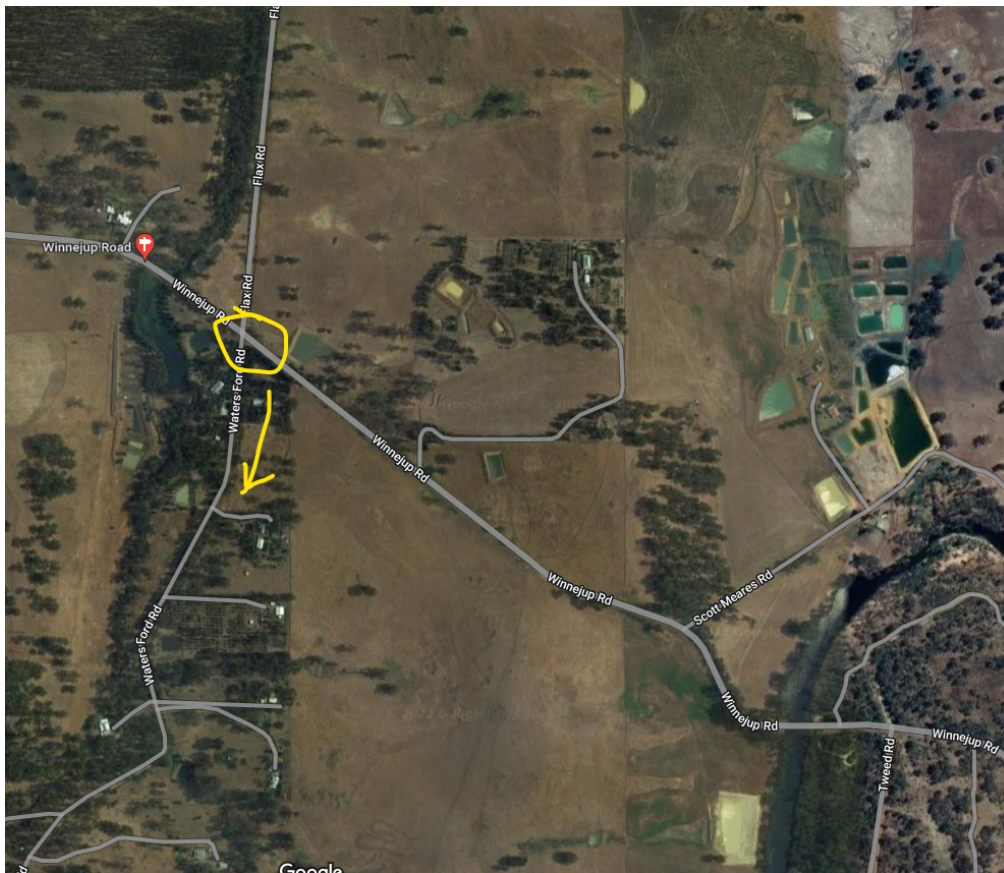
Check point 1 – Recovery only if required.

If recovery is required an official will call from Winnejump to Sunnyside oval and send instructions to the relevant support crew to collect the craft

Do not head to Winnejump unless instructed

Google maps 1341 Winnejump Road Winnejump road – Waterford Road.

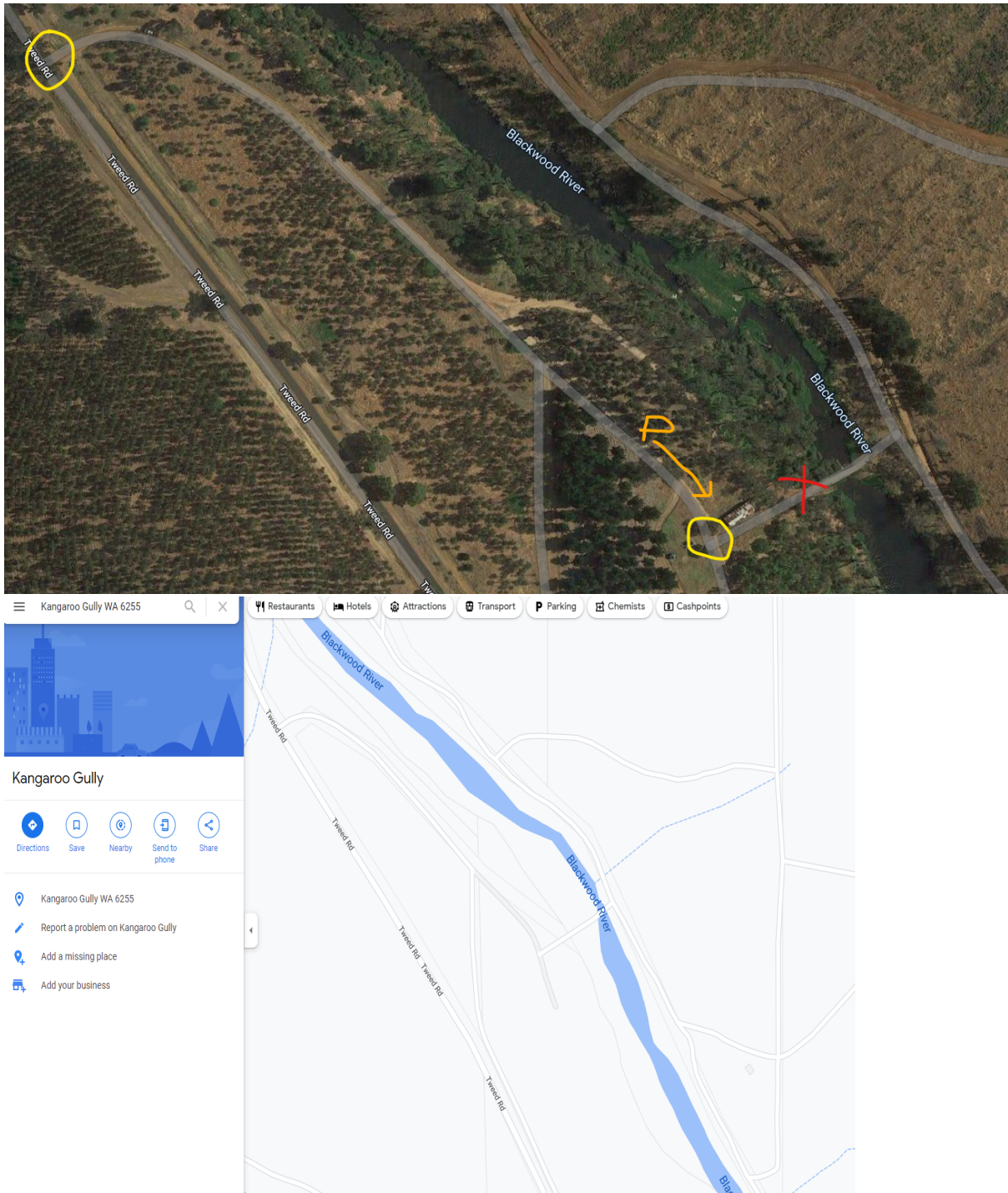
If you are instructed to collect craft from this location, gates must be left as you find them



Road crossing - Check point 3 and the Steps rapid

These viewing points are located on private properties please enter with caution.

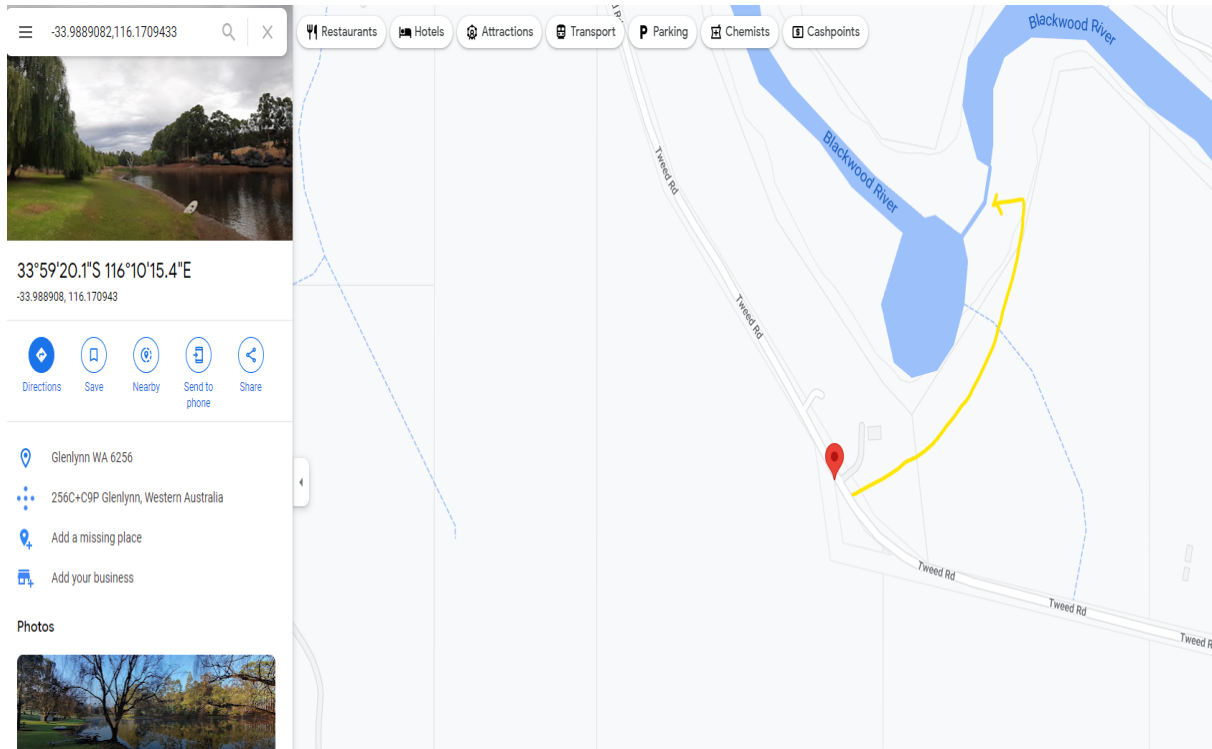
At the road crossing all vehicles must park off the road before the gate



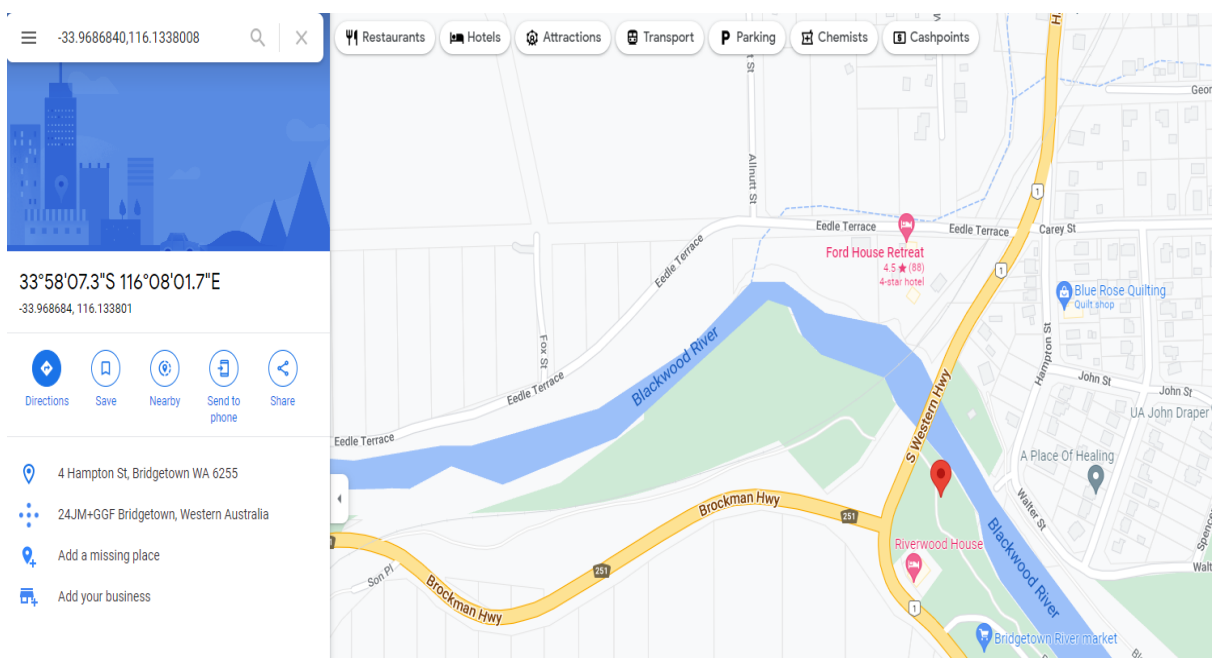
Basin Rapid

All vehicles must park on the side of the road

Private Property. Do not enter in the property - walk down the paddock on the right-hand side of the fence line to the water.



Finish line – Craft retrieval - Bridgetown



Support crew reference points from the PDRC RULE BOOK

400 SUPPORT CREW

- 405 If specified in the supplementary regulations each craft shall in an event have a support crew of at least one adult person.
- 410 The support crew of a team need not necessarily be members of the PDRC.
- 415 If specified in the supplementary regulations the support crew vehicle shall display the number of the craft it is supporting.
- 420 Motorbikes shall not be used as support crew vehicles.
- 425 Each member of the support crew shall make themselves acquainted with these rules and with the supplementary regulations of an event.

1100 INTOXICANTS

- 1105 Competitors shall not consume any intoxicants less than six hours before the start of an event and until they have finished the days racing.
- 1110 Intoxicants shall not be consumed in the pit area during a one event.
- 1115 The race director may cause a competitor to be tested to ensure that their blood alcohol content does not exceed 0.00 and if it does preclude them from entry in or disqualify them from an event.
- 1120. Failure to comply with 1105 and 1110 will result in disqualification from the event.

1200 ENVIRONMENT AND LITTERING

- 1205 The club aims to protect the environment at all times.
- 1210 A team that deliberately commits any action that has an adverse effect on the environment shall be penalised as provided in section 1700.
- 1215 A team that litters shall be penalised as provided in section 1700.
- 1220 The definition of a team (see rule 275) includes the support crew.

1300 ILLEGAL ASSISTANCE

- 1305 A competitor shall not accept assistance from the public or a support crew that takes their craft nearer the finish including following in the wake of other non-competing craft.
- 1310 Competitors may assist other competitors if the way is blocked.
- 1315 Competitors may assist other competitors in the case of impending physical danger.
- 1320 Failure to comply with rules 1305 and 1315 shall result in a penalty in accordance with section 1700.

1400 WITHDRAWALS

- 1405 A team that withdraws from an event must notify an official immediately.
- 1410 Failure to notify withdrawal shall result in a penalty in accordance with section 1700.
